

# Repair and Tuning up kit

## Type 1 1585 001R/ 001T for Hydraulic Angle Grinder Type 1 1585 0010



Illustration can differ from the original

# Repair Manual and Spare Parts List

## REPAIR INSTRUCTION

Do not disassemble the tool until you know whether the problem is in the hydraulic power supply, the gearbox module, or the power and control (rear) module. Then only disassemble the tool as necessary to repair as required. Keep contaminants such as dirt and grit away from the internal parts at all times.

Always determine and correct the cause of the problem prior to re-assemble. Further wear and tool failure can result, if the original cause is not corrected.

Disassembly and re-assembly should be done only according to the sectional drawing.

Assembly groups:

- Angle gearbox head
- Planetary gearbox
- Hydraulic motor
- Lever valve

After removing the 4 fillister-head screws item 72, the angle gearbox head can be separated from the planetary gearbox.

The planetary gearbox can be pulled from the connecting cover after loosening the screws item 22. The screws item 18 are accessible then and can be un-tightened.

Afterwards the hydraulic motor can be pulled off and the lever valve can be pulled off as well after having removed the screws item 15.

Angle gearbox head

After removing the protection cover item 82 by loosening the items 83, 84 and 85, as well as the wheel flange item 81 and holder protecting flange item 80, the gearbox cover item 61 can be loosened and be pulled out together with grinding shaft item 60, bevel wheel item 56, as well as ball bearing, feather key and rings.

Afterwards take out disc item 70 and ball bearing item 59. Take the complete lock holder item 75-79 out of the angle gearbox housing item 50 and, if necessary, continue disassembling.

Planetary gearbox

Loosen screws item 33, pull out sealing cover complete with sealing sleeve item 28, pinion shaft item 25, bevel pinion item 56, bearing and snap rings, and continue disassembling, if necessary.

Press out complete planetary wheel carrier item 3 with double planetary wheels item 6, bearings item 2,4 and 12, rim of the gear item 10 and coupling sleeve item 20 and continuer disassembling, if necessary.

Hydraulic motor: Remains complete (no disassembly)


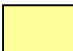
Lever valve: Remains complete (no disassembly)

Re-assembly: Basically the re-assembly is done in reverse order.

### Spare Parts

Only original spare parts may be used. There is no warranty for damages and liability is disclaimed, if non-original spare parts and accessories are used.

1 1585 001T = 

1 1585 001R =  + 



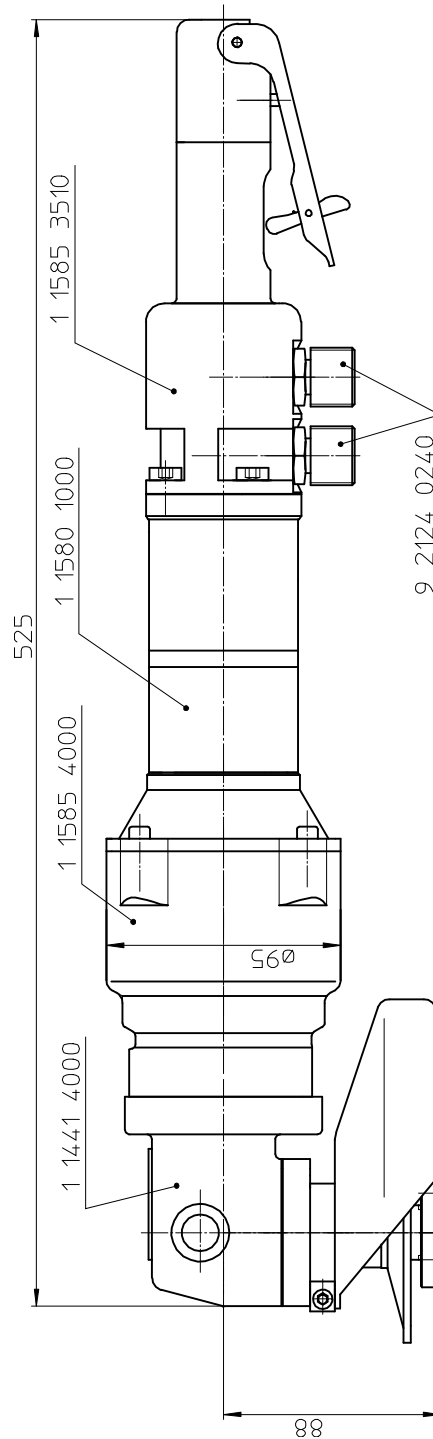
### Spare Part List

Description:

**Hydraulic Angle Grinder  
for Underwater Use**

Part and drawing number:

**1 1585 0010**



## Spare Part List

Description:

**Lever Throttle**

Part and drawing number:

**1 1585 3510**

| Item | Qty. | Description                     | Part and drawing no. | Remarks |
|------|------|---------------------------------|----------------------|---------|
| 301  | 1    | Valve housing, assy.            | 5 1220 3520          |         |
| 302  | 1    | End piece, assy.                | 5 1220 3530          |         |
| 303  | 1    | Lever                           | 5 1220 3560          |         |
| 304  | 2    | Threaded pin with inner hexagon | 9 1140 2030          |         |
| 305  | 1    | Cylinder pin                    | 9 1619 0150          |         |
| 306  | 1    | Gate                            | 2 1317 3370          |         |
| 307  | 1    | Snap ring                       | 9 1703 0260          |         |
| 308  | 1    | Socket head screw               | 9 1110 2090          |         |
| 309  | 1    | Washer                          | 9 3302 0150          |         |
| 310  | 1    | Governor piston valve           | 2 1317 3320          |         |
| 311  | 1    | Spring plate                    | 2 1317 3070          |         |
| 312  | 1    | Slide                           | 5 1220 3110          |         |
| 313  | 1    | Locking plate                   | 9 1706 0140          |         |
| 314  | 1    | Sleeve                          | 5 1220 3540          |         |
| 315  | 1    | Guide                           | 5 1220 3610          |         |
| 316  | 1    | Pressure spring                 | 9 1803 3590          |         |
| 317  | 1    | Pressure spring                 | 9 1803 1700          |         |
| 318  | 1    | Locking plate                   | 9 1706 0180          |         |
| 319  | 1    | O-ring                          | 9 1901 3290          |         |
| 320  | 1    | O-ring                          | 9 1901 9800          |         |
| 321  | 1    | O-ring                          | 9 1901 2550          |         |
| 322  | 1    | Threaded pin                    | 9 1148 3030          |         |
| 323  | 1    | O-ring                          | 9 1901 6020          |         |
| 324  | 1    | Washer                          | 9 3304 0110          |         |
| 326  | 1    | O-ring                          | 9 1901 2080          |         |
| 327  | 1    | Valve lever, assy.              | 5 5010 3940          |         |
| 328  | 1    | Trigger pin                     | 5 1220 3550          |         |
| 329  | 1    | O-ring                          | 9 1901 2020          |         |
| 330  | 1    | Grooved pin                     | 9 1627 0090          |         |
| 331  | 2    | Locking screw                   | 9 1174 0010          |         |
| 332  | 1    | O-ring                          | 9 1901 2380          |         |
|      |      |                                 |                      |         |
|      |      |                                 |                      |         |



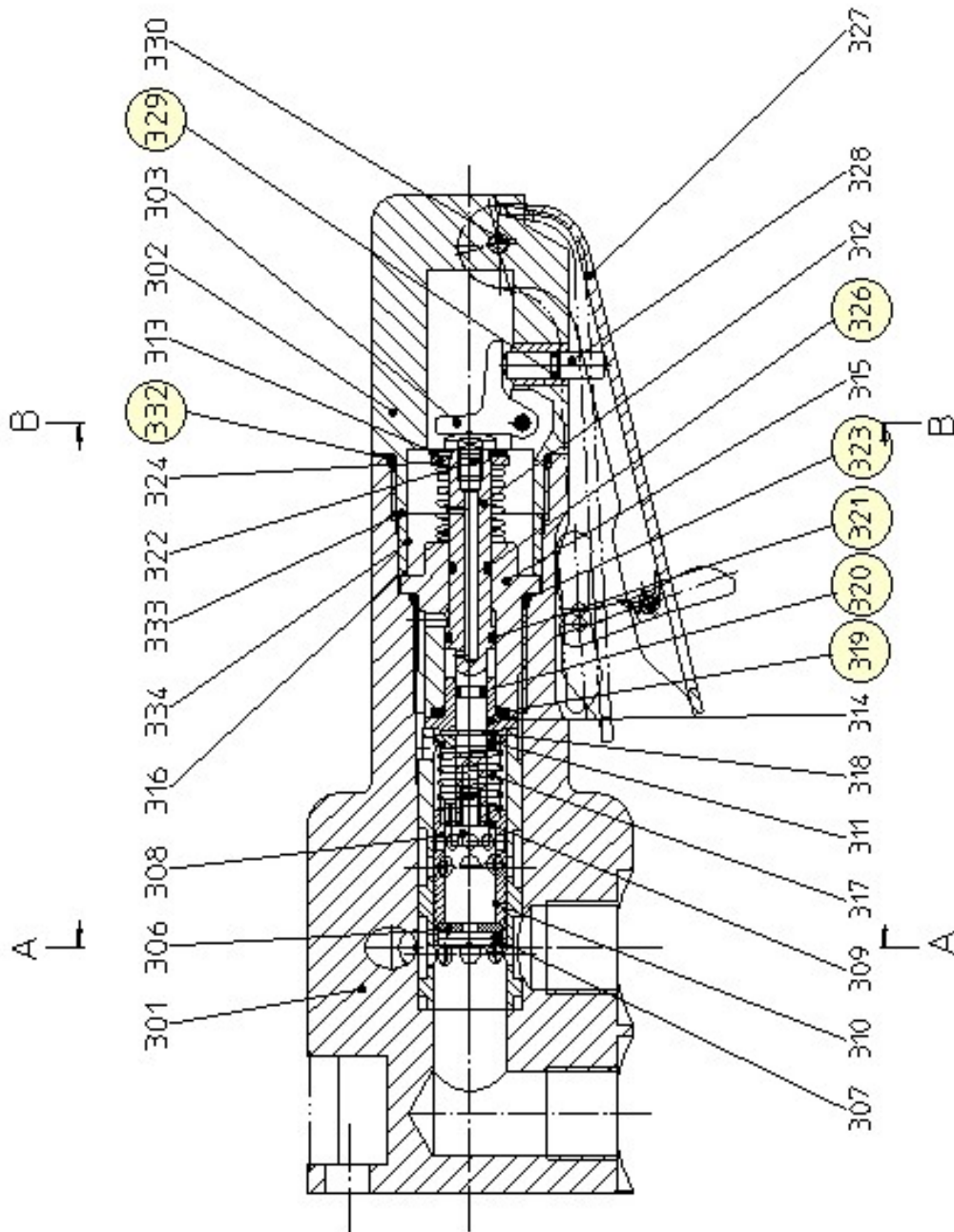
### Spare Part List

Description:

**Lever Throttle**

Part and drawing number:

**1 1585 3510**



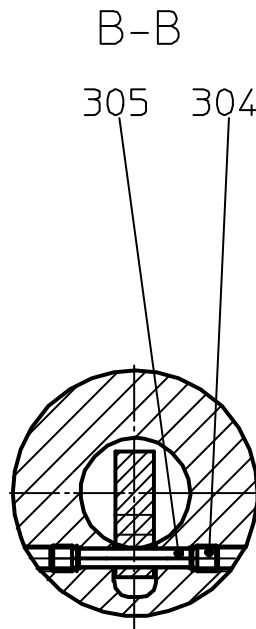
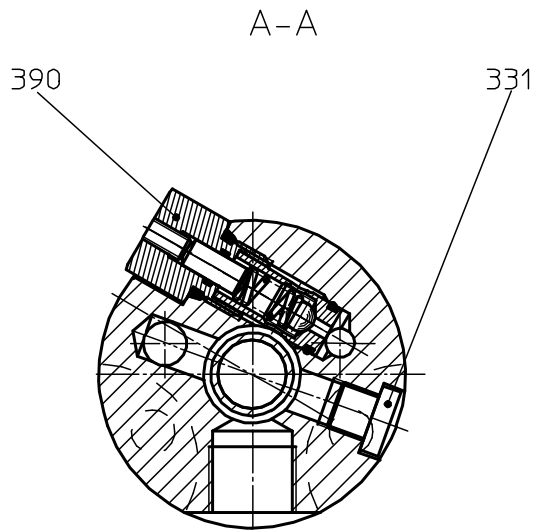
### Spare Part List

Description:

**Lever Throttle**

Part and drawing number:

**1 1585 3510**







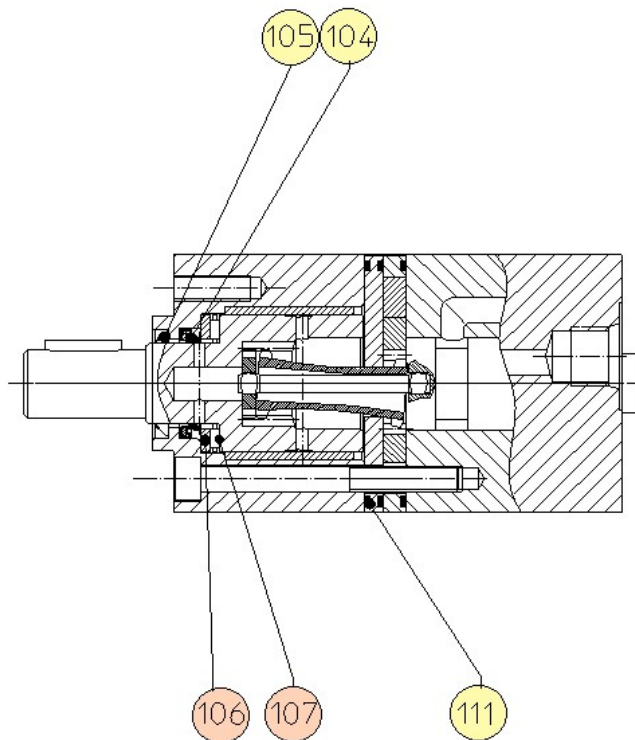
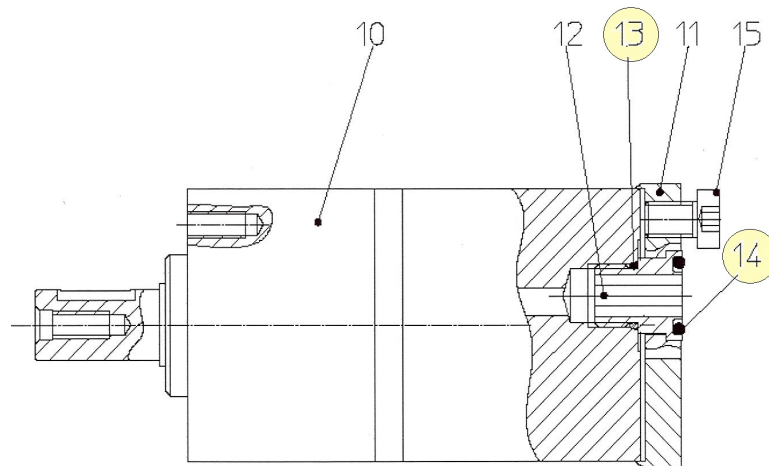
### Spare Part List

Description:

Hydraulic **Motor**

Part and drawing number:

**1 1580 1000**



## Spare Part List

Description:

Part and drawing number:

**Gearbox**

**1 1585 4000**

| Item | Qty. | Description            | Part and drawing no. | Remarks |
|------|------|------------------------|----------------------|---------|
| 1    | 1    | Gearbox housing, assy. | 1 1585 4910          |         |
| 2    | 1    | Grooved ball bearing   | 9 1002 0080          |         |
| 3    | 1    | Planet carrier         | 1 1580 4030          |         |
| 4    | 2    | Grooved ball bearing   | 9 1003 0040          |         |
| 5    | 1    | Snap ring              | 9 1703 0110          |         |
| 6    | 3    | Double planetary wheel | 1 1580 4040          |         |
| 7    | 9    | Needle cage            | 9 1015 0160          |         |
| 8    | 3    | Needle roller          | 9 1016 0520          |         |
| 10   | 1    | Gear rim               | 1 1580 4020          |         |
| 11   | 2    | Feather key            | 9 1501 2210          |         |
| 12   | 1    | Grooved ball bearing   | 9 1002 0080          |         |
| 13   | 1    | Snap ring              | 9 1702 0190          |         |
| 15   | 1    | Connecting cover       | 1 1580 4190          |         |
| 16   | 2    | O-ring                 | 9 1901 3420          |         |
| 17   | 1    | O-ring                 | 9 1921 1240          |         |
| 18   | 5    | Socket head screw      | 9 1110 4030          |         |
| 19   | 1    | Feather key            | 9 1507 9050          |         |
| 20   | 1    | Coupling sleeve        | 1 1580 4290          |         |
| 21   | 2    | Feather key            | 9 1501 3080          |         |
| 22   | 4    | Socket head screw      | 9 1110 3310          |         |
| 25   | 1    | Pinion shaft           | 1 1585 4200          |         |
| 26   | 1    | Sealing cover          | 1 1585 4290          |         |
| 27   | 1    | O-ring                 | 9 1901 2430          |         |
| 28   | 1    | Sealing sleeve         | 1 1585 7040          |         |
| 29   | 2    | Snap ring              | 9 1703 0100          |         |
| 30   | 2    | Shaft sealing ring     | 9 1905 0360          |         |
| 31   | 1    | O-ring                 | 9 1901 4650          |         |
| 32   | 1    | Tension sleeve         | 9 1630 0360          |         |
| 33   | 4    | Socket head screw      | 9 1110 2070          |         |
| 34   | 4    | Socket head screw      | 9 1110 2010          |         |
| 35   | 4    | Sealing                | 9 1908 1950          |         |
|      |      |                        |                      |         |
|      |      |                        |                      |         |
|      |      |                        |                      |         |

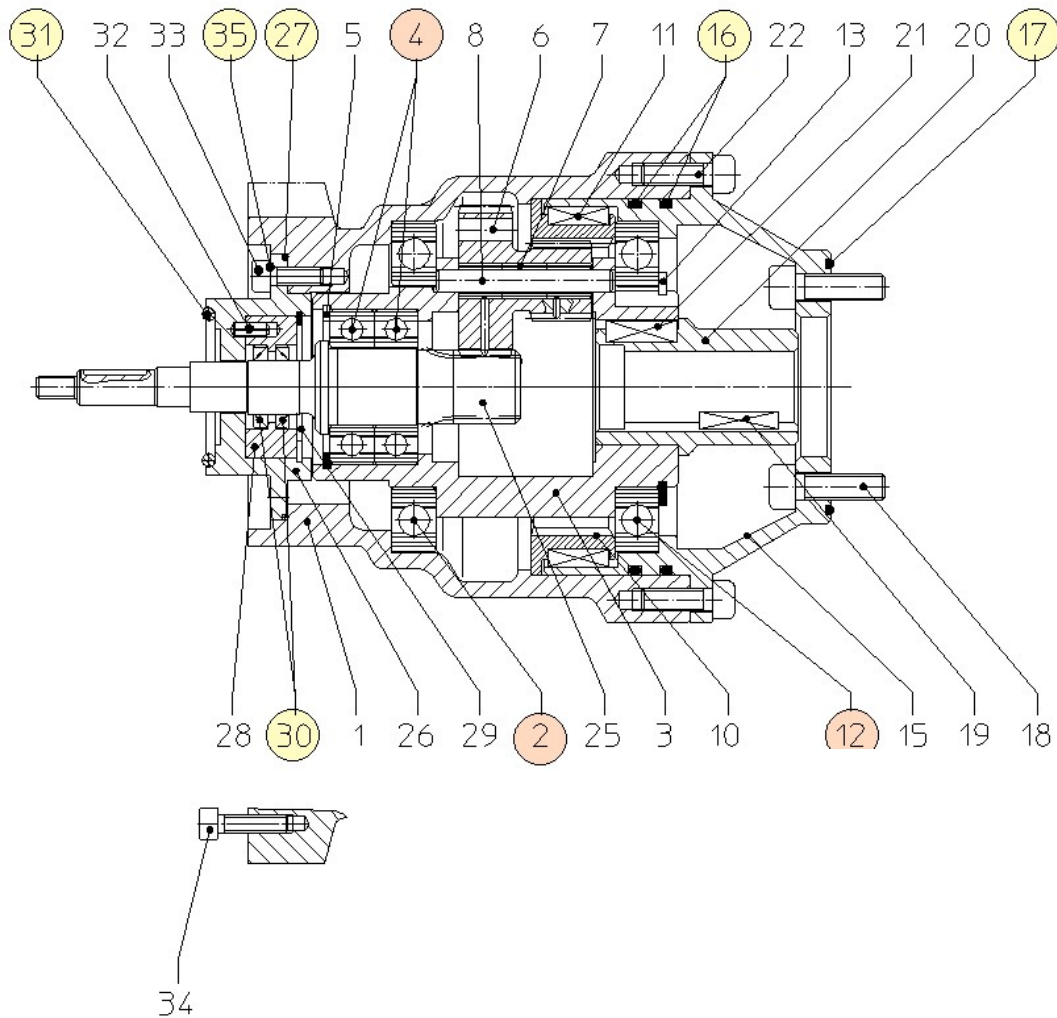
## Spare Part List

Description:

**Gearbox**

Part and drawing number:

**1 1585 4000**



## Spare Part List

Description:

Part and drawing number:

**Gearbox Head**

**1 1441 4000**

| Item | Qty. | Description                                   | Part and drawing no. | Remarks |
|------|------|---|----------------------|---------|
| 50   | 1    | Angle gear housing, assy.                     | 1 1585 4920          |         |
| 51   | 1    | Grooved ball bearing                          | 9 1001 0390          |         |
| 52   | 1    | Snap ring                                     | 9 1703 0050          |         |
| 53   | 2    | Compensating disc                             | 1 1440 4410          |         |
| 53   | 2    | Compensating disc                             | 1 1440 4420          |         |
| 54   | 1    | Sealing package                               | 9 1908 0960          |         |
| 55   | 1    | Feather key                                   | 9 1501 9030          |         |
| 56   | 1    | Pair of bevel gear wheels                     | 1 1440 4400          |         |
| 57   | 1    | Washer  | 9 3304 0030          |         |
| 58   | 1    | Hexagonal nut                                 | 9 1210 0120          |         |
| 59   | 1    | Grooved ball bearing                          | 9 1001 0070          |         |
| 60   | 1    | Grinding shaft                                | 1 1440 7220          |         |
| 61   | 1    | Gearbox cover                                 | 1 1441 4430          |         |
| 62   | 1    | Compensating disc                             | 1 1440 4440          |         |
| 62   | 1    | Compensating disc                             | 1 1440 4450          |         |
| 63   | 1    | Ring  | 9 1904 0070          |         |
| 64   | 1    | Grooved ball bearing                          | 9 1003 0410          |         |
| 65   | 1    | End plate                                     | 1 1440 4460          |         |
| 66   | 3    | Socket head screw                             | 9 1110 2110          |         |
| 67   | 1    | Feather key                                   | 9 1501 2210          |         |
| 68   | 1    | Rim   | 9 3327 0070          |         |
| 70   | 8    | Spring washer                                 | 9 3322 0060          |         |
| 74   | 1    | Handle, assy..                                | 2 1312 6010          |         |
| 80   | 1    | Holding flange                                | 1 1585 8130          |         |
| 81   | 1    | Wheel flange                                  | 1 1585 8050          |         |
| 82   | 1    | Guard, assy.                                  | 1 1440 8000          |         |
| 83   | 1    | Socket head screw                             | 9 1110 3100          |         |
| 84   | 1    | Spring washer                                 | 9 3312 0010          |         |
| 85   | 1    | Hexagonal nut                                 | 9 1203 0030          |         |
|      |      | Spacer ring e. g. for straight grinding tools |                      |         |
| 86   | 1    | Spacer ring                                   | 1 1585 8140          |         |



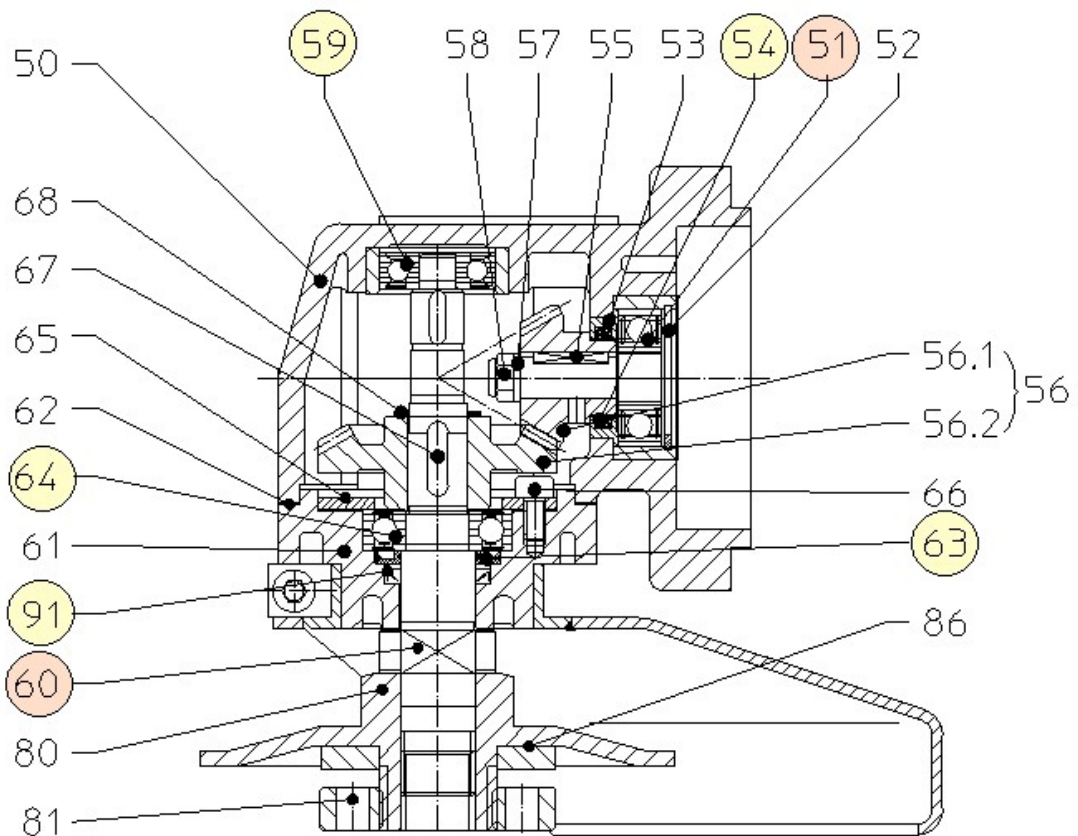
## Spare Part List

Description:

**Gearbox Head**

Part and drawing number:

**1 1441 4000**



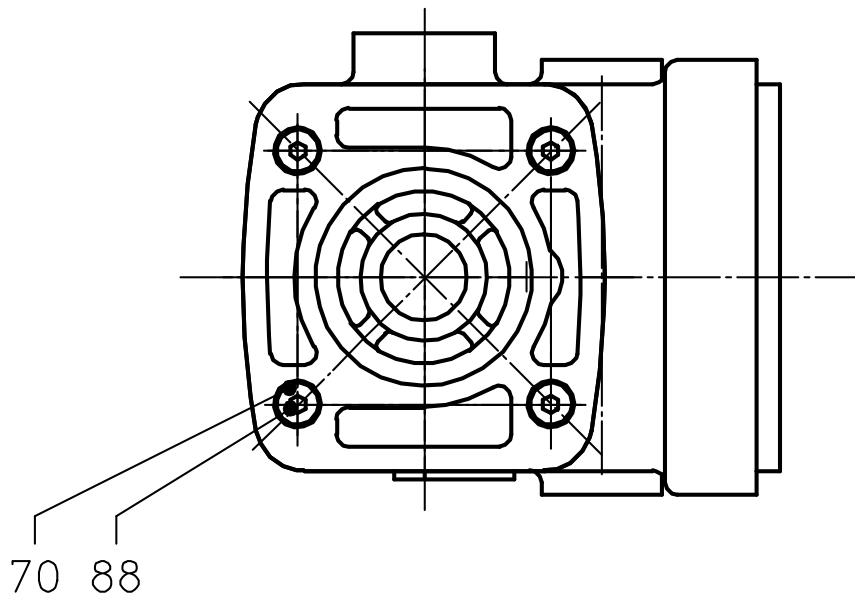
### Spare Part List

Description:

**Gearbox Head**

Part and drawing number:

**1 1441 4000**





### Spare Part List

Description:

**Angle Gearbox Head**

Part and drawing number:

**1 1441 4000**

